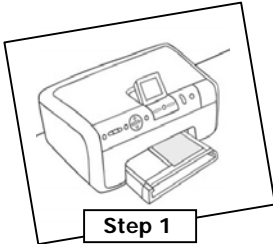


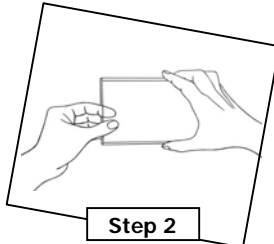
Share-It Photo Magnet Pockets are a great way to instantly display and share digital prints on the fridge, cabinet or locker in the home, office or school. Simply print then insert your photo in the Magnet Pocket for a quick and easy frame. It's refillable so you can change your photos to keep your display fresh and current. And extra Printworks Satin Photo Paper is included making printing and displaying even easier.

3 EASY STEPS



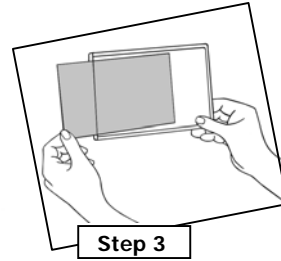
Step 1

Print photo. Follow Photo Paper Printing Instructions included with the photo paper.



Step 2

Squeeze sides of magnet to open pocket for easier photo insertion. Storing unused Magnet Pockets away from direct sun and heat will prevent surfaces from sticking.



Step 3

Slide photo through opening. Insert printed photo completely inside pocket for either portrait or landscape orientation.

USE & CARE

- Keep Magnet Pockets out of direct sunlight and heat sources. Share-It™ Photo Magnet Pockets may become cloudy or slightly yellow if placed in these environments.
- Share-It™ Photo Magnet Pockets are flexible and will adhere to curved surfaces without cracking. Only apply to surfaces that are between 40°F and 160°F.
- For best results, ensure that Magnet Pocket and receptive surface are free from dust and grease. Clean surfaces with a damp cloth.

OTHER IDEAS USING SHARE-IT™ PHOTO MAGNET POCKETS

Hold invitations and appointment cards – Store cards and notes inside Pockets for visible reference on fridge, metal cabinet or door.

Steel cabinet or drawer identification – Organize yourself by taking photos of contents and add corresponding text, insert in Magnet Pocket and apply to surface to easily identify what's inside.

Trim for wallet-size photos or business cards – Using sharp scissors or blade trim Magnet Pocket from sealed edge to sealed edge to create smaller double-opening 'sleeves' and pocket for small-sized photos and cards.