

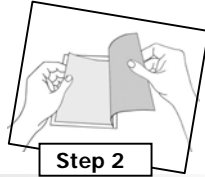
Share-It Photo Laminate Pouches are a great way to instantly protect, display and share digital prints. The crystal-clear finish preserves and protects the print from damage caused by grease, fingerprints, dust, smudges and even water drops – perfect when carrying prints in a purse, pocket, briefcase or displaying in the kitchen, entryway, etc. And no special laminators, heat or tools are required. Just print your photo with the included Printworks Satin Photo Paper using your inkjet printer, seal in the laminate pouch and display.

4 EASY STEPS



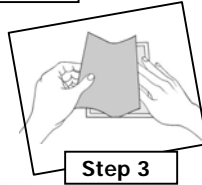
Step 1

Print photo. Follow Photo Paper Printing Instructions included with the Printworks Satin Photo Paper.



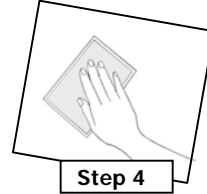
Step 2

Open laminate pouch on a flat surface. Center photo on top of crystal clear layer, print-side down. Butt the photo edge into the spine. Remove the narrow liner strip that is against the spine. Adhere the exposed sticky surface to the photo to lock the photo in place.



Step 3

Grab the liner edge that is against the spine and carefully peel with even pressure across the photo, holding the spine with your other hand. The sticky laminate surface will adhere to the back of the print as you peel.



Step 4

Firmly press down the laminate to adhere all edges. Press from the center to outer edges to remove any trapped, air bubbles.

USE & CARE

- Keep pouches out of direct sunlight and heat sources. Share-It™ Photo Laminate Pouches may discolor or slightly yellow if placed in environmental conditions that are not between 14°F and 140°F.
- Only laminate when internal temperatures are above 50°F.
- For best adhesion, ensure that laminate surfaces are free from dust, grease and fingerprints during application.
- The laminate's adhesive will not stain the back of photo paper nor penetrate through to the image surface. However, do not expose the image to the adhesive surface.

OTHER IDEAS USING SHARE-IT™ PHOTO LAMINATE POUCHES

Trim for wallet-size photos or business cards – Laminate several cards or small-size photos leaving ¼" around each for trimming. Using sharp scissors or blade trim Laminate Pouch around each photo or card and press edges for a tight seal.

Seal licenses and paper membership cards – Eliminate torn and bent documents by laminating them. (Always check the fine print for any restrictions on laminating the card or license before laminating.)

Laminate business cards for luggage tags – Insert business card (or a photo to uniquely identify your bag), seal and punch a small hole in a sealed edge for a luggage strap.