

Digital Mini Photo Album: Assembly Instructions

A. Cover Assembly

-  Hold cover with the outside (frosted) facing away from you. Bend the two inner most creases towards you.
-  Slide binding ring inside cover between T-shaped flaps. Press gently on the T-shaped flaps until they lock into place.
-  Close cover and press down flap on other side as shown.
-  Press down crease firmly to form book cover as shown.





B. Design and Print Your Photo Album



Use Printworks Print Suite to design and print the pre-punched sheets. Print on side opposite the adhesive strip. A photo inkjet printer with 4"x6" capability is required. Borderless print option is required to print borderless pages.

Printer Type	Media Type	Print Quality	Paper Size	Other
HP Ink Jet & HP PhotoSmart Printer	HP Premium Photo Paper Glossy	Best	Borderless 4x6	
Canon Bubble Jet Printers	Glossy Photo	High	4x6 Orientation: Portrait Borderless Print: Select	BJC: Photo Realistic
Canon S Series	Photo Paper Pro	Fine (Custom Set)	4x6 Orientation: Portrait Borderless Print: Select	
Epson Stylus Photos & Epson Ink Jets	Premium Glossy Photo Paper	Mode: Custom Custom Settings: Advanced Print Quality: Best Photo High Speed: Off	Borderless 4x6	
Lexmark	Glossy Photo Paper	High	Customize: 4x6 Orientation: Portrait	Natural Color

C. Assemble Your Photo Album

-  Lift and remove protective cover strip.
-  Fold paper in half so that the images are facing out and seal edges.
-  Press T-shaped cut-outs in photo pages gently from top into binding rings. Before you insert additional pages turn previous pages towards the left.
-  You're Finished! Enjoy your new Digital Mini Photo Album!

Tip: If you want to reposition a page, gently lift it upward at the binding rings.

Printworks Print Suite Quick Start Instructions

A. Design Project And Select Layout

Start software and select desired Digital Photo Album format out of the Start Assistant. Click OK button.



Choose your layout from the menu on the left. You can preview the layout in the right side of the window.



B. Explore The Print Suite



Book End Indicator
Moves along as you add pictures, indicating the end of book.

Your Photos
Choose your picture-folder and drag and drop your favorite photos into the double page view.

Album Preview
Gives an overview of pages designed. To rearrange photos within the album, simply drag and drop them to the desired location.

Double Page View
Work on each page in the editing area. Arrange and enlarge your photos within the frame. Make color adjustments and add text.

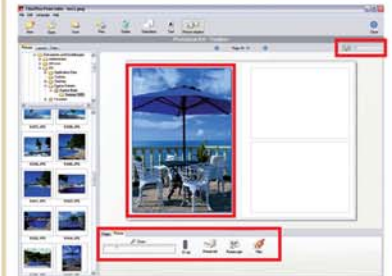
C. Add Photos



Place Your Photos
Select an image and drag and drop it directly into your photo album page. Place it in one of the predefined picture areas.

Select Several Photos At One Time
Hold down the **Ctrl** key and click on the photos that you want to insert. They will be inserted in their original sequence.

D. Select, Cutout And Zoom

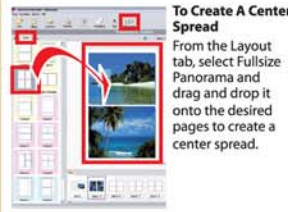


Select A Picture
Under the Picture tab you can adjust zoom, rotate and add effects.

Position
Drag and drop your picture into the desired location.

Zoom
Pressing **Ctrl** while using the mouse wheel allows you to zoom the whole photo album view or drag the sliding magnifier bar.

E. Change The Layout Of A Page



Layouts
Available layouts are grouped in colors. Top color layouts fit your current basic layout.

Changing The Layout
Select a new layout and drag it onto the corresponding page. The former layout will be replaced. As long as there is enough space, the pictures will be inserted from the former layout into the new one.

F. Rearrange Sequence Of Pictures



Single Pages
Select the Pages tab and drag the small image you want to move to its desired destination. If there is already a picture there it will be replaced.

Double Pages
Sort your double pages by clicking on the page numbers and dragging the whole double page between the two others.

G. Text and Color



Add Color Fields
Select a color and drag and drop it onto one of the page segments.

Add Text
Use text fields to personalize your photo album and give it a special design.

H. Add Text



Edit Text
In the Text tab you can type your text and customize it as you like. Choose from any font on your computer. Select size, color, alignment and more.

Activate/deactivate text-shadowing in the Text toolbar.

I. Print Your Photo Album



Select your printer from the drop-down list. Change the printer Properties to match the settings in the Information section of the Print screen.

Important: When printing a borderless album set the print seam adjustment before you start printing your whole album.